

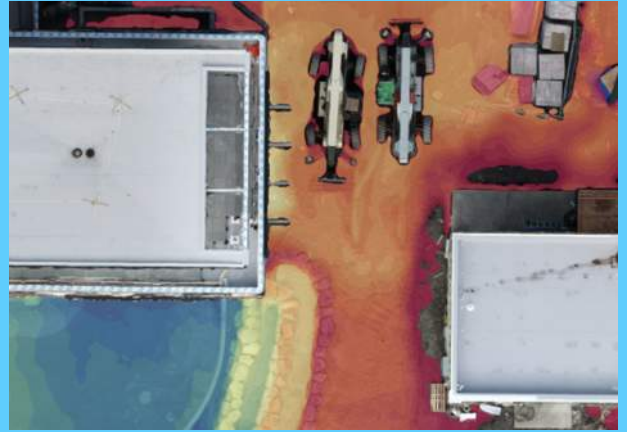


enhancing the superpower  
of spatial intelligence

# AERIAL DRONE CONSTRUCTION MAPPING, SURVEYS, INSPECTIONS

- ~25 years of commercial and residential construction experience and knowledge
- ~Map & visualize your entire project in one view
- ~Survey-grade accuracy for informed decision making
- ~Audit safety measures across your projects
- ~Document and analyze critical placements for quality assurance
- ~Overlay architectural plans on as-built conditions to verify accuracy
- ~Gain a vantage point and quickly inspect hard to view areas
- ~Elevation and contour mapping
- ~Pre-construction mapping for site logistic plans and baseline
- ~Mapping and imagery for supplemental bidding information
- ~Accurate linear, sf, and volumetric measurements from maps & imagery
- ~Quickly audit cut/fill, stock piles, or stored/placed materials
- ~Progress imagery and documentation for project teams and owners
- ~Interior 360 imagery for virtual walkthroughs and digital record
- ~Overlay project timeline maps to compare and analyze
- ~As-built documentation for permanent record
- ~Construction defect and claim documentation
- ~Compelling 2D and 3D deliverables for technical and non-technical stakeholders
- ~Point cloud outputs for integration with CAD and BIM
- ~3d Digital Twin as final project deliverable

## Elevations, Cut/Fill, Volumes



## Safety Inspections/Audits



## Overlay Architectural Plans



**Put the power of drone data into the hands of project teams.**



503-451-3747  
mike@aerialethos.com  
www.aerialethos.com